

# PILOTINFO

## OPEN DOOR KIEWIT EBZH

### GENERAL INFORMATION

Runway	09/27 – 660mx60m – grass <ul style="list-style-type: none"><li>• RWY 09: left hand circuit</li><li>• RWY 27: right hand circuit</li></ul>
Elevation	141ft
Hasselt radio	118,330 Mhz
PPR	+32 11 21 25 50
Fuel	100LL available
Landing fee	Waived for the entire event
Customs and immigration	Not available

### REGISTRATION

Thank you for visiting our event with your aeroplane. We would appreciate it if you could register your aircraft so that we can estimate how many aircrafts we are expecting during the open door.

This can be done by filling out the form through the following link: <http://ebzh.be/odd-bezoekers/>

### SAFETY MEASURES

In order to have a safe and enjoyable event, we ask you to adhere to the following:

- The first 15 minutes of each hour are reserved for special events (i.e. model aircraft, etc...). It is not possible to depart or land during these 15 minutes. Please take this into consideration when planning your flight;
- EBZH is **radio mandatory** during the open door;
- Make sure you read the NOTAMS;
- During the entire weekend there will also be glider and helicopter activity, so have a sharp look out;
- Although flight info is provided by Kiewit tower, EBZH remains an uncontrolled airfield. Pilots remain responsible for their separation;
- Training flights are prohibited during the open door.

### LOW LEVEL FLY-BY AND AEROBATICS

- These are strictly **PROHIBITED** in an area of 2,5 Nm around EBZH below 2000ft AMSL;
- Normal fly-by and formation flights may only be done after prior permission by Hasselt radio;
- The pilot in command bears the full responsibility for the lookout, the separation with other aircrafts and the overall safety of all manoeuvres;

# PILOTINFO

## OPEN DOOR KIEWIT EBZH

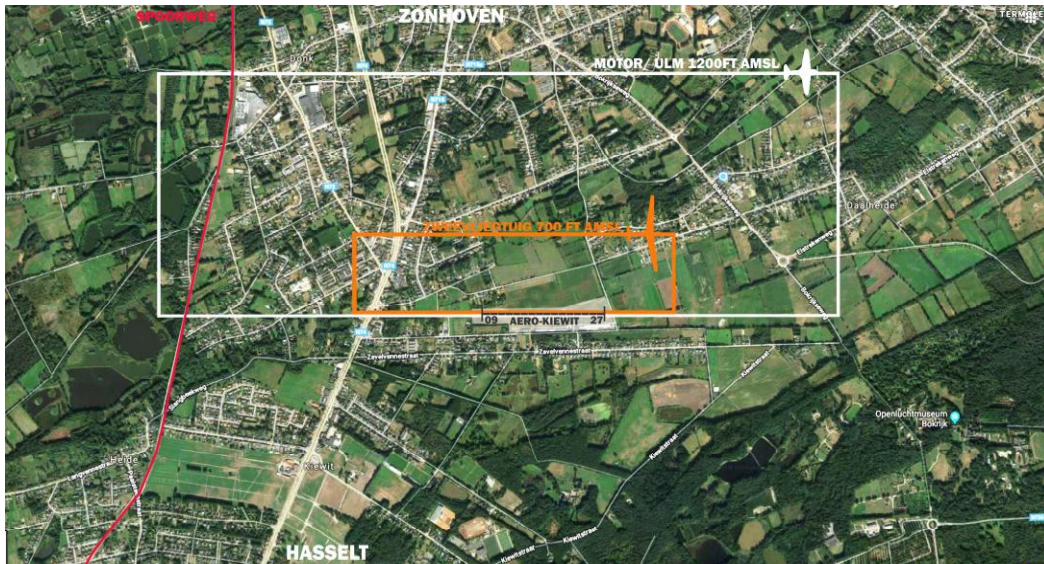
- Fly-by may only be done in the direction of the traffic flow; **Under no circumstances can the public be overflown!**
- Minimum distance line from the public during manoeuvres is the runway centre line;
- **NO FLYING MANOEUVRES BELOW 1000FT AMSL;**
- All formation flights require a prior briefing between the pilots concerned and have to be performed in compliance with the Belgian regulation;
- Formation take off and landing are not allowed.

### DIVERSION AIRFIELDS

In the unlikely event that EBZH would be closed, these are possible diversion airfields.

EBZW	6,3 Nm	TRK 065°	FREQ	120.405 Mhz
EBST	13,0 Nm	TRK 212°	FREQ	119,980 Mhz
EBLE	9,4 Nm	TRK 344°	FREQ	125.530 Mhz
EBKH	14,0 Nm	TRK 335°	FREQ	120.310 Mhz

### ARRIVAL AND LANDING PROCEDURE



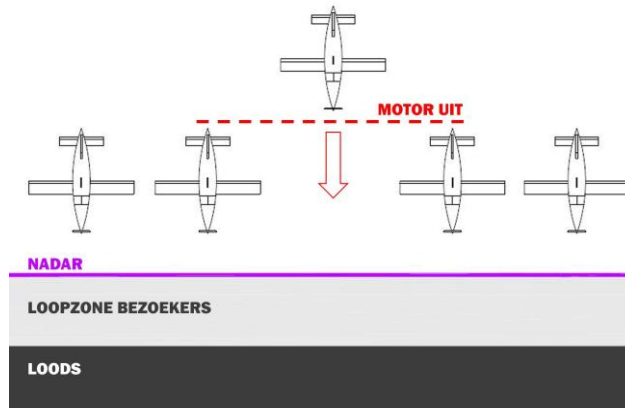
The frequency can be saturated if there is a lot of flying activity. Please be patient and keep your transmissions short and concise.

- Reminder: EBZH uses a righthand circuit when runway 27 is in use;
- Contact Hasselt Radio (118,330) 10 minutes before arrival, for the latest info;
- State on first contact if you need fuel, preferably after landing;

## PILOTINFO

### OPEN DOOR KIEWIT EBZH

- Maintain radio contact after landing until you have a marshaller in sight, he will guide you to your parking spot;
- Do not turn the tail of your aircraft towards parked aircrafts or the fencing (nadar) when the engine is still running.



### AFTER ENGINE SHUTDOWN

- Proceed to the C next to Kiewit tower, you will receive a small gift;
- Fill out the airport logbook, don't forget to close your flightplan
- Brussels briefing office tel: +32 2 2062540
- There will be no hangarspace available, please bring your own tie down equipment; <sup>?</sup>  
The aircraft parking will be guarded at night; <sup>?</sup> Smoking is prohibited on the entire airfield.

### DEPARTURE PROCEDURE

- Proceed to C, fill out the airport logbook;
- PIC is responsible for his flightplan;
- No activity is allowed between 17:00 LT and 17:20 LT

### BEFORE START UP

- It is mandatory to call Hasselt Radio before start up, restriction may be in force;
- Do not turn your tail towards parked aircrafts or the fencing (nadar) , with the engine running; <sup>?</sup> A marshaller can assist you to leave your parking spot; <sup>?</sup> Call Hasselt Radio before starting to taxi.